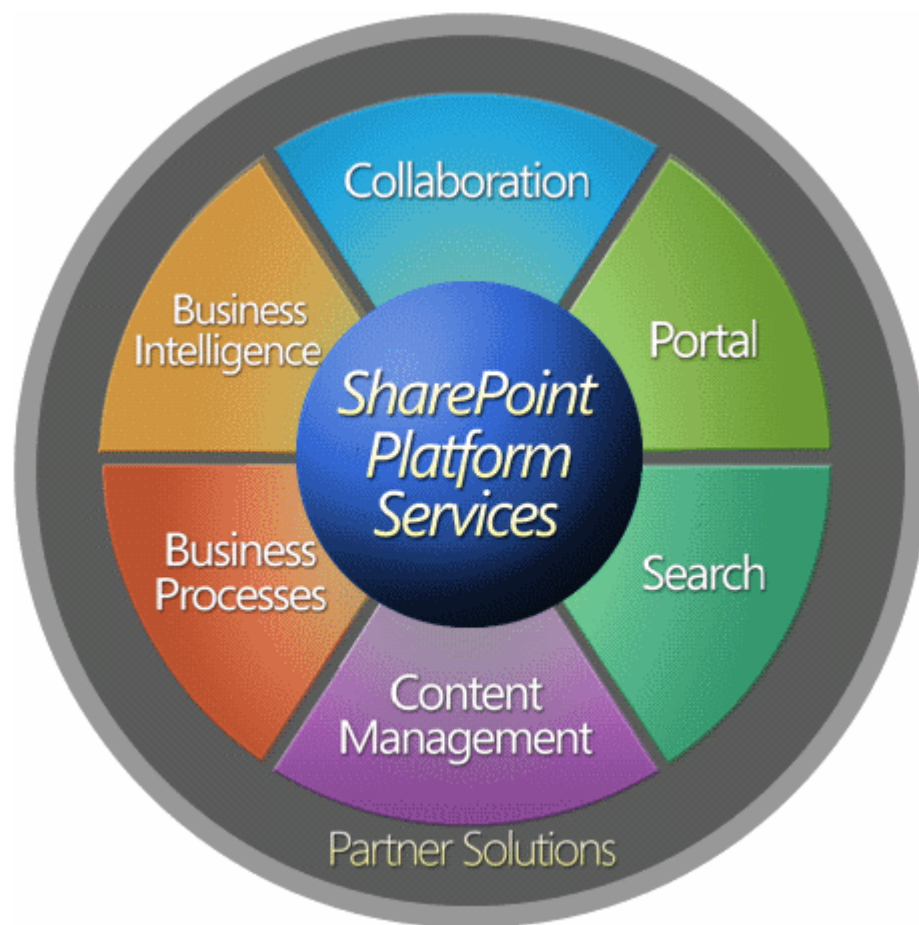


What's New in SharePoint 2010

SharePoint 2010 provides a unique set of capabilities, unified within a single infrastructure, which connects and empowers people to share information, whether that information sits within corporate boundaries or resides on a company's extranet or customer-facing website.



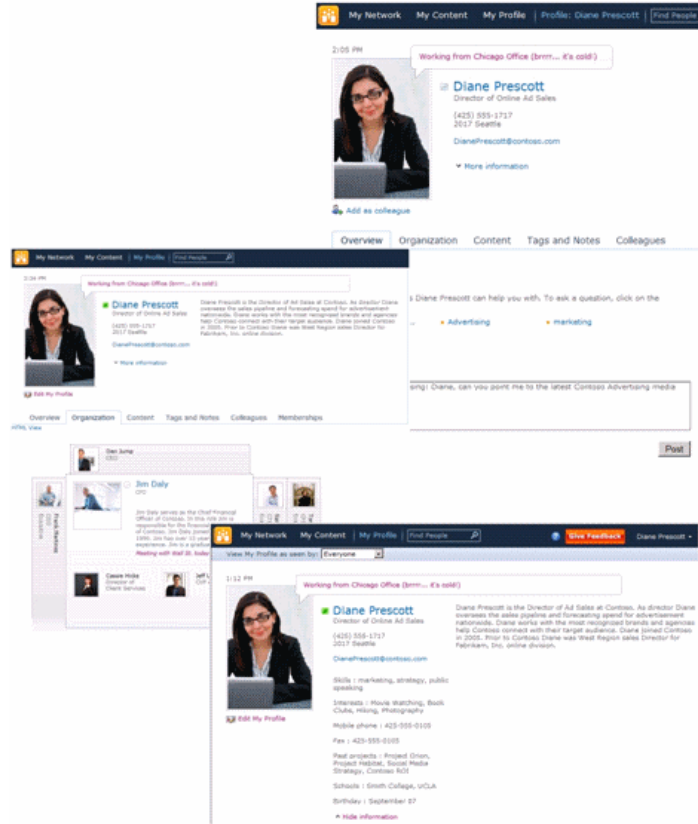
SharePoint Sites provides the essential portal technologies including web part framework, security model, personalization, multi-lingual, support for rich media and streaming, and much more.

SharePoint Communities introduces new ways for people to work together simply and efficiently. This includes traditional forms of collaboration with features like workspaces for document sharing, human based workflow, and team calendars and task lists. It also includes the latest Enterprise 2.0 (or Social Networking) capabilities.

SharePoint 2010 is effectively an enterprise social computing platform with support for blogs and wikis, RSS feeds, people and expertise search, colleague tracking, and social networks. Additionally, SharePoint is closely integrated with Office Communications Server so that your SharePoint Communities can take advantage of presence, instant messaging, and real-time sharing.

Building communities

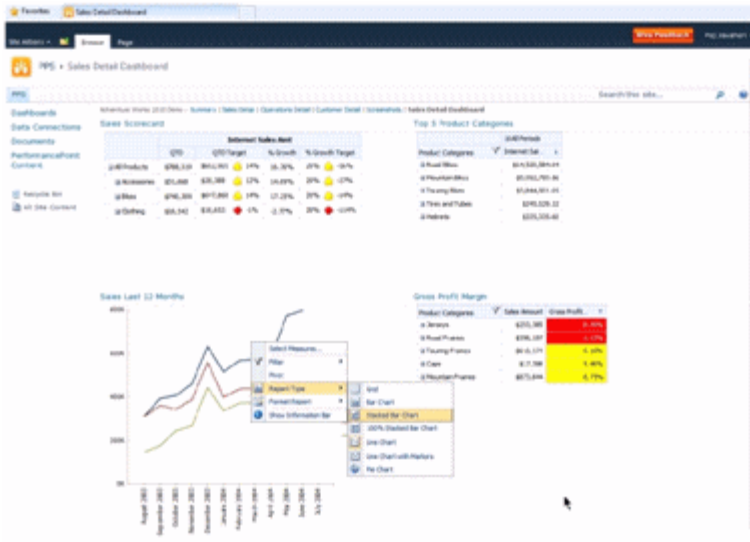
- People Profiles
- Photographs and Presence
- “Ask Me About”
- Recent Activities
- Note Board
- Organization Browser
- Add Colleagues
- Social Bookmarks



SharePoint Content includes capabilities to manage enterprise information all the way from creation through the destruction and disposition of the content itself. SharePoint manages all types of content including Office documents, rich media files, web pages, html content, as well as social networking content like blogs and wikis.

To ensure corporate compliance, SharePoint supports policy and records management, process management and customizable workflows, and a rich infrastructure for corporate governance. And with SharePoint’s unified infrastructure, you use the same content management facilities for publishing to your company’s Intranet as you do extranets and customer-facing internet sites.

Now a core aspect of managing the mountains of content piling up in organizations is enabling great search to help people find and discover the information they need. **SharePoint Search** can index content in not only SharePoint sites, but also in legacy collaboration and content systems, file shares, databases, and line of business systems.



Self-service Insights

- Access to information
- Rich analytics
- Visualization
- Simplified navigation
- Simplified administration

Across all of these capabilities, SharePoint offers a rich extensibility layer to rapidly build custom solutions. **SharePoint Composites** provides everyone from power users to corporate developers with quick and easy tools to mash up and build composite apps. For example, using the new SharePoint Designer, and without writing a single line of code, you can change the site design, assemble web parts, customize workflows, and integrate data from multiple repositories. Similarly, the new **Access Services** lets end users build simple tracking applications and relational databases which can then be shared across a department or the entire organization within a SharePoint site, but while also being managed and controlled by IT.

Feature Name / Area	SharePoint Server 2007	SharePoint Server 2010
Browser-based customizations	<input type="checkbox"/>	<input checked="" type="checkbox"/>
Business Connectivity Services		<input checked="" type="checkbox"/>
SharePoint Designer	<input type="checkbox"/>	<input checked="" type="checkbox"/>
Human workflows	<input type="checkbox"/>	<input checked="" type="checkbox"/>
Forms Services	<input type="checkbox"/>	<input checked="" type="checkbox"/>
Visio Services		<input checked="" type="checkbox"/>
Access Services		<input checked="" type="checkbox"/>
Sandboxed Solutions		<input checked="" type="checkbox"/>

Where to Begin?

Call RSM McGladrey today. We are Microsoft Certified Technology Specialist in Microsoft Office SharePoint Server Configurations with over fifteen years of development experience. Our team is adept in all aspects of application development with a particular focus on teamwork and standardization of development methodologies. Our method for approaching this strategy, planning and implementation process is proven and created from our many years of experience. We'll help you plot an appropriate strategy for leveraging SharePoint technologies.

For more information on Microsoft® SharePoint 2010, contact Tammy Zeoli at 856.722.6228 or tammy.zeoli@rsmi.com